

Maddox-Muse Center

McDavid Studio

Van Cliburn Recital Hall

Technical Specifications

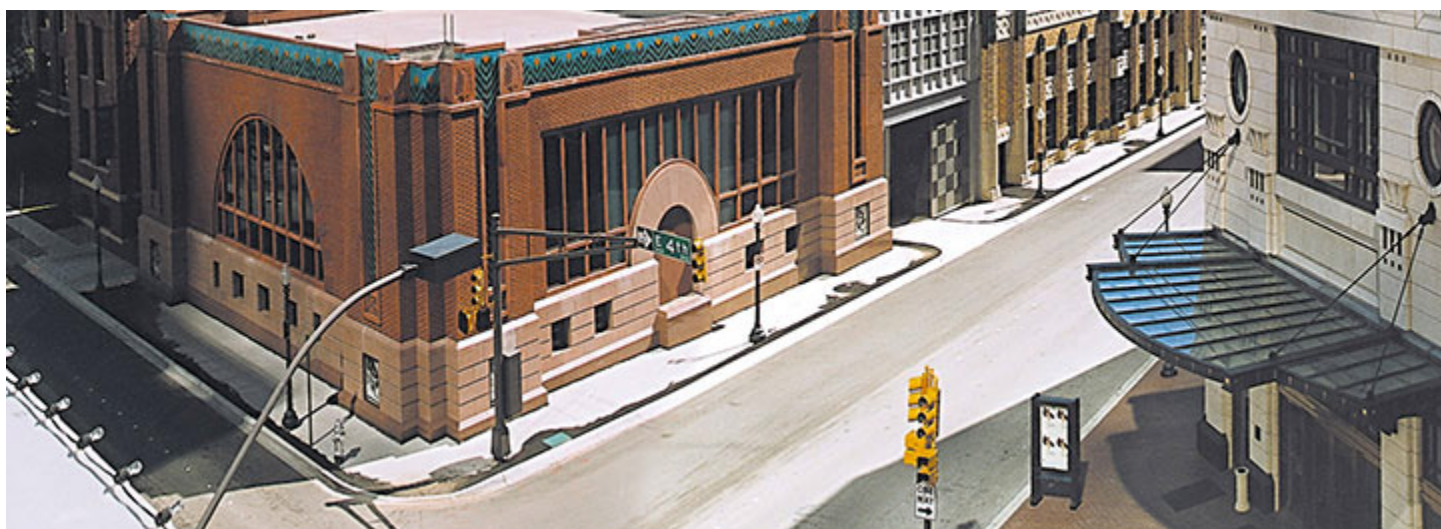


Table of Contents

<u>Maddox-Muse Center - History</u>	3
<u>Location and Parking</u>	4
<u>Contacts</u>	5
<u>McDavid Studio</u>	6
<u>Lighting - McDavid Studio</u>	7
<u>Video - McDavid Studio</u>	7
<u>Audio - McDavid Studio</u>	8
<u>Dressing Rooms - McDavid Studio</u>	9
<u>McDavid Ground Plan</u>	9
<u>Van Cliburn Recital Hall</u>	10
<u>Lighting - Van Cliburn Recital Hall</u>	11
<u>Video - Van Cliburn Recital Hall</u>	11
<u>Audio - Van Cliburn Recital Hall</u>	12
<u>Van Cliburn Recital Hall - Ground Plan</u>	13
<u>Miscellaneous Information</u>	14

Maddox-Muse Center

Maddox-Muse Center was originally built as the Fort Worth Medical College. The Fort Worth Medical College was established as the medical department of Fort Worth University in 1894 by a group of prominent area physicians. Among those in its small charter class was Francis Daisy Emery, the first woman medical school graduate in Texas. The college moved to its location in 1905, and in 1911 became affiliated with Texas Christian University. In 1918, the medical college relocated to Dallas to become associated with Baylor University's medical school. During its 24 years in Fort Worth, the Medical College graduated approximately 400 students.



The building was renovated in 1998 by Performing Arts of Fort Worth, to be used as administrative offices. In 2000, David Schwartz designed the two recital halls (The Van Cliburn Recital Hall and the McDavid Studio) that were added on to the original building. These halls were built in mind for the resident companies to utilize for practice and for commercial use for private and public events.

Maddox-Muse Center is a non-smoking facility.

Location & Parking

Address

301 E. 5th Street

Fort Worth, TX 76102

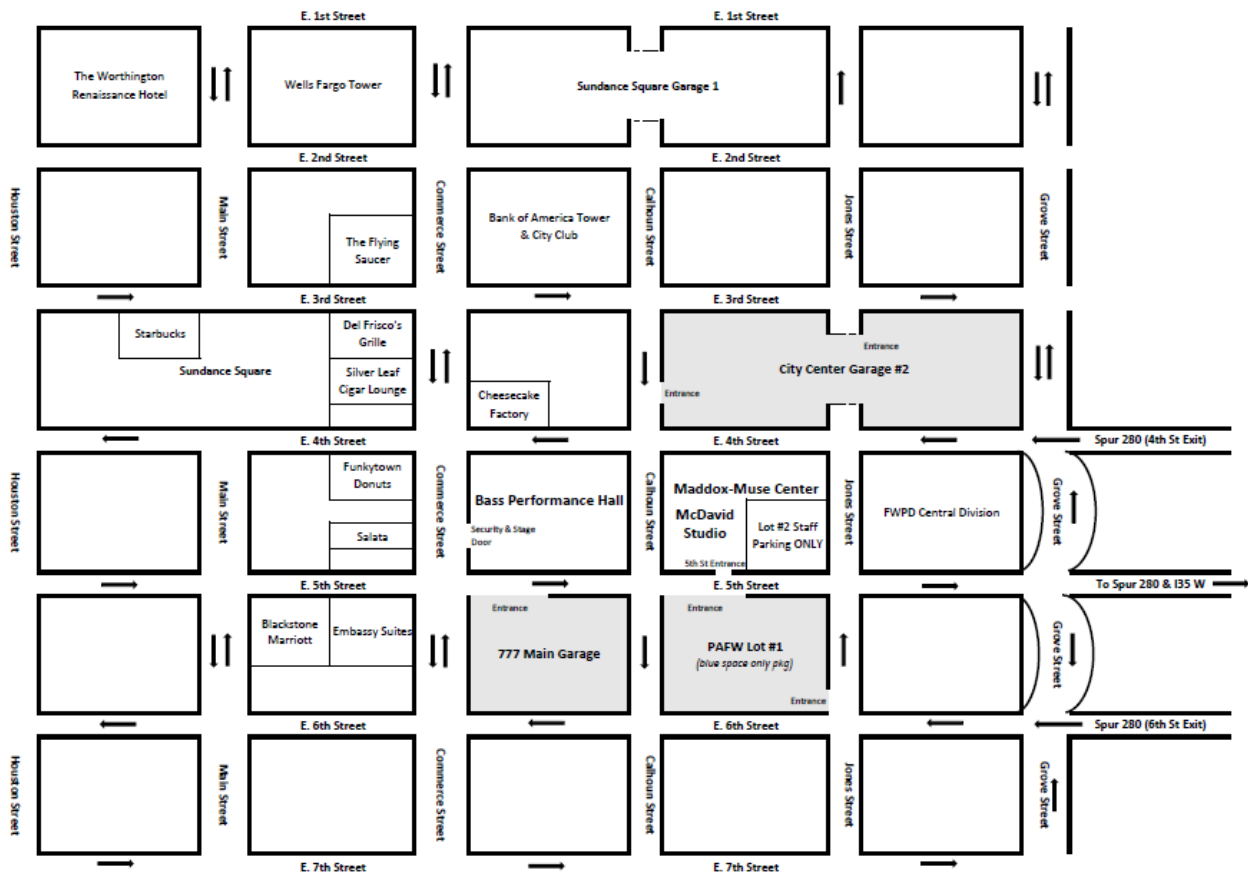
Loading Dock

550 Jones Street

Fort Worth, TX 76102

Truck and bus parking

Temporary parking is allowed in the loading zone. No long-term parking is permitted.





Contacts

The Programming & Engagement Management department can provide information and scheduling for the following:

- Technical and/or production requirements
- Facility information for production areas, stage equipment, parking regulations and permits
- Special equipment needs, availability and extra charges
- Scheduling information and requirements for Production personnel
- Other production-related activities, permits and requests
- For additional information, please feel free to contact our Production Staff.
- Special events packet, rates and details available upon request

Jacob Mobberley
Production Manager,
Senior Technical Director
Office: 817-212-4265
jmobberley@basshall.com

Justin Perrin
Manager of Programming &
Engagement Management
Office: 817-212-4209
jperrin@basshall.com

Hannah Guinn
Assistant Director of Programming &
Engagement Management
Office: 817-212-4214
hguinn@basshall.com

Additional Contacts

Charles McCormick	Technical Director, Audio	817-212-4263	cmccormick@basshall.com
Dylan Walker	Production Technician	817-212-4269	dwalker@basshall.com
Drew Clevenger	Hospitality Services Manager	817-212-4259	dclevenger@basshall.com
Maria Williams	Hospitality Services Manager	817-212-4271	mwilliams@basshall.com
Jim Carley	Director of Safety & Risk Mgmt.	817-538-1371	jcarley@basshall.com
Mark Coffey	Asst. Director of Safety & Risk Mgmt.	817-212-4266	mcoffey@basshall.com
Sean Carroll	Safety & Risk Management Manager	817-401-1970	scarroll@basshall.com



McDavid Studio-

McDavid Studio is a versatile studio/multi-purpose space located in the Maddox Muse Center at 301 E. 5th Street, across the street from Bass Performance Hall. It features off-Broadway productions as well as national and local music acts. In addition, McDavid Studio is available as a rental space and is perfect for hosting any number of events, from corporate meetings to wedding receptions.

Equipment

Events that require additional equipment may potentially be supplemented from other Venue inventories and systems. This equipment is used by multiple events in multiple areas. Availability is limited and must be arranged in advance through venue Production. Labor for setup of additional equipment, as well as additional equipment, will be billed as necessary. **All equipment below is subject to availability.**

Floor

The McDavid Studio has a sprung floor consisting of Tongue and Groove maple flooring on 2 x 4 sleepers with resilient pads (sprung). The floor cannot be painted or screwed into. Repair for any damage to floor will be charged at the prevailing rate.

Dimensions

53' X 72'

Height

16'9"

Capacity

250-300 depending on configuration.

Power

Dimmer Room: 4- 100Amp, Lighting Power (if available) 1- 60-amp, Hubbell Pin & Sleeve (single phase) *
Catering Supply: 1- 60Amp, Hubbell Pin & Sleeve (single phase) *
North Wall: 5- 20Amp, Audio isolated

**Nutech Distribution box with 20-amp stringer available upon request.*

Stage

Wenger StageTek 4' x 8' platforms are used to make the stage in McDavid Studio. Adjustable legs of 8", 16", and 24" heights are available.

*Please contact Production for use of any equipment. **All equipment is subject to availability.***



McDavid Studio cont.

Lighting - McDavid Studio

Control Equipment

ETC Element - 60 Faders, 250 Channels 1 Universe optional 2nd Universe.

Dimmable Circuits

48 ETC Sensor dimmer circuits available – Light plot available upon request.

Instrument Inventory

Type	Wattage	Quantity	Frame Size
ETC Source Four 36°	575 w	6	6 1/4"
ETC Source Four 50°	575 w	6	6 1/4"
ETC Colorsourc Spot 90°(LED)	185 w	6	Permanent Install
ETC D-40 Vivid (LED)	110 w	5	
VARI-LITE SL Punchlite 220(LED)	230w	5	
Chauvet Colorado TriTour (LED)	87 w	22	Permanent Install
Altman 6" Fresnel	500w	12	

Cable

10', 20', 30', 50' and 100' socapex, 3, 4 and 5-pin XLR, stage pin and Edison extension available upon request. 6-circuit socapex break-ins/ break-outs, stage pin two-fers and stage pin/ Edison adapters also available.

**Bass Performance Hall lighting inventory can be used in McDavid Studio-subject to availability---Please contact the Production Department for a complete list or visit: [Bass Hall – Tech Specs](#)*

Video - McDavid Studio

Projector

Panasonic PT- RZ970 – 10k Lumen(Laser)

Projection Screen

-Roll down 7.5'x14' (16:9)* This screen is permanently hung on the north wall of the room.

-Da-Lite Fastfold 7.5'X10' (4:3)

Video Playback

Macbook Pro with Qlab & Microsoft suite (Optional & subject to availability)



McDavid Studio cont.

Audio - McDavid Studio

Control Equipment

- The main system mixer is a Soundcraft Vi3000
- All signal routing and speaker processing is done with BSS London Blu Soundweb processor.

Input Infrastructure

- Stage Rack provides 40 XLR inputs and 16XLR outputs (8 mono and 4 stereo)
- Console provides 48 XLR inputs and 8XLR outputs

Microphones

- Wireless Shure ULXD2 Band Transmitter with Shure SM58 (2 KSM9 capsules available upon request)
- Wireless Shure ULXD1 Band Transmitter with Countryman B6 elements.

A full complement of wired microphones are available. Tripod and boom base stands are also available. Please contact Production Department for microphone list.

Loudspeakers

- (2) Meyer UPQ-2P (Per Side)
- (3) Meyer UPJ (Per Side)
- (2) Meyer UPJ (Center Fill)
- (1) Meyer 700HP (Per side)
- (6) Meyer M1D-SM (Front Fill)

Wired in Stereo

Stage Monitors

- (6) Meyer UPJ

Assisted Listening System

Williams Sound PPA-T45 transmitter (wireless, operating at 72.1 75.9 MHz) and suitable compliment of PPA-R38 receivers with Shure SE425 earphone for Assisted Listening.

Communications

- (1) FreeSpeak II-Base-II Digital Wireless Base Station (not accessible)
- (4)FS II-BP24 Wireless belt pack with headset

Cable

10', 20', 30', 50' and 100' XLR. Audio Snakes and quad boxes available depending availability.

McDavid Studio cont.

Dressing Rooms

(dressing rooms conform to Actor's Equity Association Standards)

Room	Normal Use	Capacity
Dressing Room #1(Left)	Principal Artist/Band	6-8 People (w/ Shower & Toilet)
Dressing Room #2(Right)	Principal Artist/Band	4-6 People (w/ Shower & Toilet)





Van Cliburn Recital Hall-

The **Van Cliburn Recital Hall** is a multipurpose performance space with outstanding acoustics and plenty of legroom. The Van Cliburn Recital Hall is available as a rental space and is perfect for hosting your upcoming wedding, party, meeting or corporate event.

Floor

The Van Cliburn Recital Hall (VCRH) has a sprung floor consisting of Mesquite flooring on 2 x 4 sleepers---this is not a sprung floor. The floor cannot be painted or screwed into. Repair for any damage to floor will be charged at the prevailing rate.

Dimensions

52' X 67'

Height

21' to the grid

Capacity

250-300 depending on configuration.

Power

Catering Supply: 1- 60Amp, Hubbell Pin & Sleeve (single phase)*

South Wall: 1-20Amp, Audio isolated

**Nutech Distribution box with 20 amp stringer available upon request*

Stage

Wenger StageTek 4' x 8' platforms are used to make the stage in Van Cliburn Recital Hall. Adjustable legs of 8", 16", and 24" heights are available.



Van Cliburn Recital Hall cont.

Lighting - Van Cliburn Recital Hall

Control Equipment

ETC Element - 60 Faders, 250 Channels 1 Universe optional 2nd Universe.

Dimmable Circuits

12 ETC Sensor dimmer circuits available – Lightplot available upon request.

Instrument Inventory

Type	Wattage	Quantity	Frame Size
ETC Source Four 36°	575w		
ETC Junior 50°	575 w	14	6 ¼"
ETC Junior 26°	575 w	0	6 ¼"
ETC ColorSource PARs (LED)	89w	24	Permanent House Lights
ETC Selador Vivid R	144w	20	Permanent Wall Washes

Cable

10', 20', 30', 50' and 100' socapex, 3, 4 and 5-pin XLR, stage pin and Edison extension available upon request. 6-circuit socapex break-ins/ break-outs, stage pin two-fers and stage pin/ Edison adapters also available.

Bass Performance Hall lighting inventory can be used in McDavid Studio-subject to availability---Please contact the Production Department for a complete list or visit: [Bass Hall – Tech Specs](#)

Video - Van Cliburn Recital Hall

Projector

Panasonic PT- RZ970 – 10K Lumen(Laser)

Projection Screen

-Roll down 7.5'x14' (16:9)* This screen is permanently hung on the South wall of the room.

-Da-Lite Fastfold 7.5'x10' (4:3)

Video Playback

Macbook Pro with Qlab & Microsoft suite (Optional & subject to availability)



Van Cliburn Recital Hall cont.

Audio – Van Cliburn Recital Hall

Control Equipment

- Midas Venice 320, 32 Channel Analog Mixer.
- Midas Venice 240, 24 Channel Analog Mixer.
- Allen & Heath Zed-18, 10 analog channels + 4 instrument inputs and USB output.

Input Infrastructure

- Stage Rack provides 40 XLR inputs and 16XLR outputs. (8 mono and 4 stereo)
- Console provides 48 XLR inputs and 8XLR outputs.
- All signal routing and speaker processing is done with BSS London Soundweb processor.
- All amplifiers are by Crest Audio.

Microphones

- Shure ULXD2 Band Transmitter with Shure SM58.
 - Shure ULXD1 Band Transmitter with countryman B6 Lavaliers.
- A full complement of microphones is available. Tripod and boom base stands are also available. Please contact Production Department for microphone list.*

Loudspeakers

- (6) EAW JF200e
 - (2) EAW SB250
- Evenly distributed throughout the ceiling all shooting straight down.*

Stage Monitors

- (6) Meyer UPJ

Assisted Listening System

Williams Sound PPA-T45 transmitter (wireless, operating at 72.1 75.9 MHz) and suitable compliment of PPA-R38 receivers with Shure SE425 earphone for Assisted Listening.

Communications

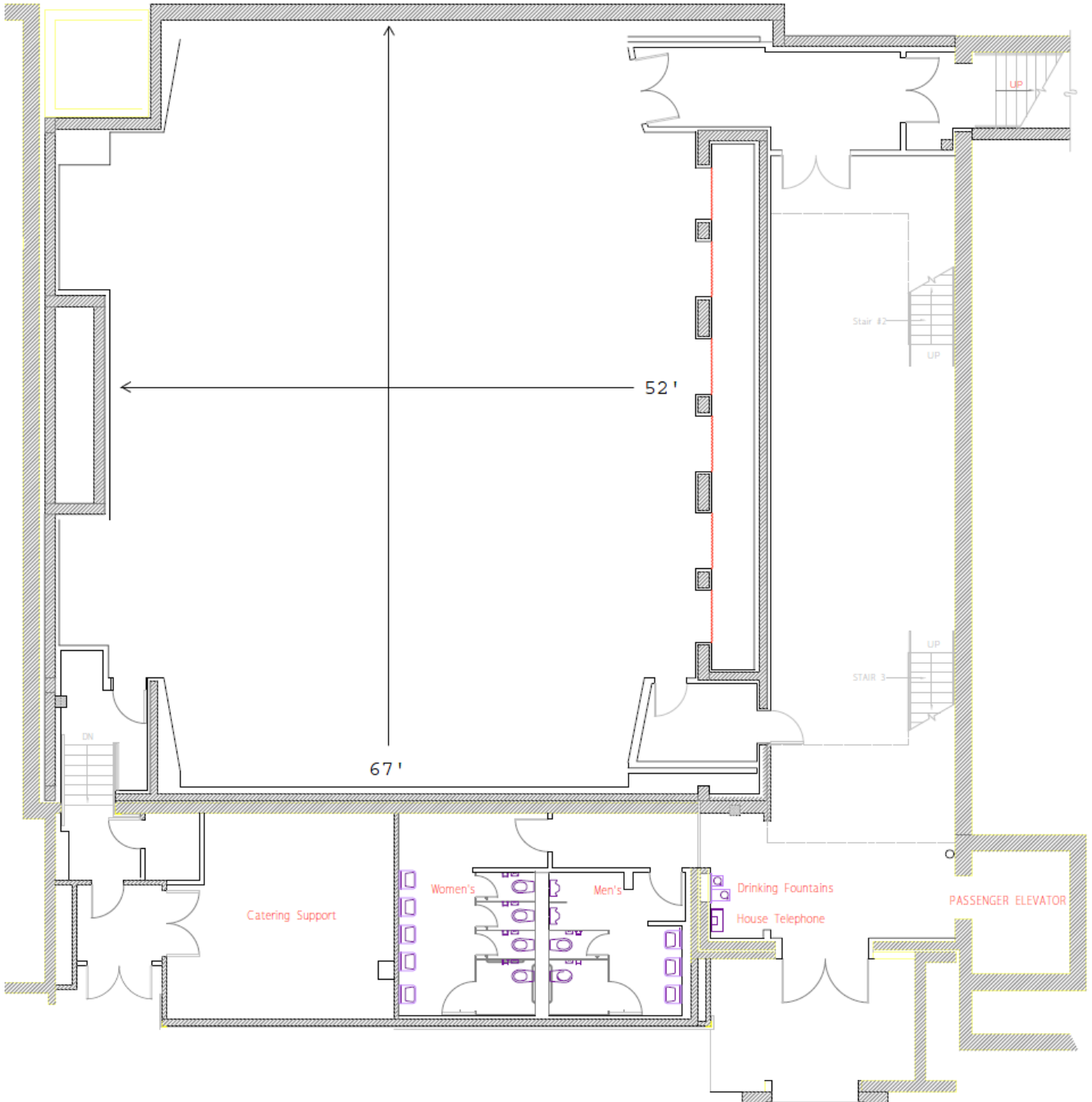
- (1) FreeSpeak II-Base-II Digital Wireless Base Station (not accessible)
- (4) FS II-BP24 Wireless belt pack with headset

Cable

10', 20', 30', 50' and 100' XLR. Audio Snakes and quad boxes available depending availability.

Van Cliburn Recital Hall - Ground Plan

**Please note, there are no dressing rooms for the Recital Hall*





Miscellaneous Information

Support Areas

Maddox Muse has multiple support areas that may be utilized for any production or event.

Canteen Catering Support

Van Cliburn Catering Support

McDavid Studio Catering Support

Additional Equipment

Tables:

60" Round

66" Round

72" Round - *Limited Supply*

30" Round - *Seated or Standing*

6ft Rectangles

Chairs:

(300+) White Garden Chairs

(300+) Black Mesh Chairs

(80) Musician's Chairs

(20) Cello Chairs

- Music Stands

- Podium with Mic

- Rolling TV stand - 55" Vizio 4K w/ Blu-Ray Player

*Please contact Production or Hospitality for use of any equipment listed above. **All equipment is subject to availability.***

Production Telephone & Internet

Event rental telephone lines and hardwired internet connections are available for rent on request with locations in most backstage and event areas. Bass Performance Hall wifi is free and available at all times. To access, connect to BPH Guest, open a web browser and agree to the terms.

Please contact Production for any special requests pertaining to special hardwired internet connections or telephones needs.

Security

As the owners and operators of Bass Performance Hall, Performing Arts Fort Worth has security measures in place in an effort to enhance comfort and provide the safest environment possible for our patrons, artists, and organizations that call Bass Hall home. Please visit our Security section on Bass Hall's website for the latest information and procedures [HERE](#).

If you See Something, Say Something!