

Bass Performance Hall

Technical Specifications



TABLE OF CONTENTS

NANCY LEE & PERRY R BASS PERFORMANCE HALL	2
ABOUT THE HALL	3
CONTACT INFORMATION	4
LOCATION & PARKING	5
LOADING DOCK	6
STAGE	7
SOFT GOOD INVENTORY	7
RIGGING SPECIFICATIONS	8
GROUND PLAN	9
ELEVATION DIAGRAM	10
ORCHESTRA PIT DIMENSIONS	11
FOH RIGGING DIAGRAM	12
POWER DISTRIBUTION	13
LIGHTING SPECIFICATION	14
STAGE POWER DISTRIBUTION DIAGRAM	15
BASS HALL SECTION VIEW	16
AUDIO MIX POSITION	17
AUDIO & COMMUNICATION SPECIFICATIONS	18
VIDEO EQUIPMENT	19
DRESSING ROOMS & WARDROBE	20
ORCHESTRA LEVEL DRESSING ROOMS	21
LOWER LEVEL DRESSING ROOMS	22
MISCELLANEOUS INFORMATION	23

Hit the Bass Hall logo on the top left corner to bring you back to this page

[Nancy Lee & Perry R Bass Performance Hall](#)

Bass Performance Hall is the crown jewel of a city which boasts the nation's third largest cultural district. It is also an important symbol of one of the most successful downtown revitalization efforts in the country.

Built entirely with private funds, Bass Performance Hall is permanent home to the Fort Worth Symphony Orchestra, Texas Ballet Theater, Fort Worth Opera, and the Van Cliburn International Piano Competition and Cliburn Concerts. Each resident company operates independently from Performing Arts Fort Worth and manages its own programming schedule at Bass Hall.



Performing Arts Fort Worth, the non-profit organization that oversees management of the Hall, also presents national Broadway touring product under the Broadway at the Bass banner, as well as programming that includes Broadway Specials, Popular Entertainment and McDavid Studio Concert Series.

The 2,042-seat multipurpose Hall is characteristic of the classic European opera house form. An 80-foot diameter Great Dome tops the Founders Concert Theater while two 48-foot tall angels grace the Grand Facade. Since the Hall opened in May 1998, the angels have become preeminent cultural icons of the Dallas-Fort Worth community. The Hall itself is renowned for its superb acoustics, exceptional sight lines and ambience on level with the great halls of the world.

Bass Performance Hall is located on a full city block encompassed by Commerce, Calhoun, 4th and 5th Streets in the historic Sundance Square district of downtown Fort Worth



About the Hall

Covid-19 Protocols

For our latest and most updated protocols please visit Bass Hall's [Covid reopening plans](#) on our website.

Seating

2042 Total seats: Orchestra Pit (62), Parterre Circle (196), Orchestra Main (689), Box Tier (170), Mezzanine (367), Lower Gallery (245), Upper Gallery (313)

Labor

Bass Performance Hall employs the International Alliance of Theatrical Stage Employees (I.A.T.S.E). All additional stagehands called to work in the theater are members of I.A.T.S.E. Local 126. House equipment, including but not limited to personnel lifts, lighting consoles, sound consoles, stage lifts, fly systems and canopies will be operated by a Bass Hall Technical staff member or a stagehand designated by the venue technical staff.

Fire Safety

Certified Fort Worth Police and rescue is contracted for any performance or event that uses open flame, smoke, haze or pyrotechnic effects. Fire Watch requests should be provided as part of the advance and should be submitted to Production no later than 2 weeks before the date of the event.

Production Telephone & Internet

Event rental telephone lines and hardwired internet connections are available for rent on request with locations in most backstage and event areas. Bass Performance Hall wifi is free and available at all times. To access, connect to BPH Guest, open a web browser and agree to the terms.

(Please contact Production for any special requests pertaining to special hardwired internet connections or telephones needs.)

Security

As the owners and operators of Bass Performance Hall, Performing Arts Fort Worth has security measures in place in an effort to enhance comfort and provide the safest environment possible for our patrons, artists, and organizations that call Bass Hall home. Please visit our Security section on Bass Hall's website for the latest information and procedures [HERE](#).

If you See Something, Say Something!



Contact Information

Performing Arts Fort Worth - Administrative Offices

Maddox-Muse Center
330 East 4th Street, Suite 300
Fort Worth, Texas 76102
Phone: 817-212-4300

Box Office

Phone: 817-212-4280
Email: boxoffice@basshall.com

Information and scheduling for the following services and equipment are coordinated through the Special Engagement and Production departments:

- Technical and/or production requirements
- Facility information for production areas, stage equipment, parking regulations and permits
- Special equipment needs, availability and extra charges
- Scheduling information and requirements for production staff
- Other production-related activities, permits and requests

Jacob Mobberley
Production Manager, Senior
Technical Director
Office: 817-212-4265
jmobberley@basshall.com

Hannah Guinn
Assistant Director of Engagement
Management
Office: 817-212-4214
hguinn@basshall.com

Jason Wise
Vice President of Programming &
Engagement Mgmt.
Office: 817-212-4309
jwise@basshall.com

Additional Contacts

Additional contact can be found in the PAFW online [Staff Directory](#)



Location & Parking

Physical Address

525 Commerce Street
Fort Worth, TX 76102

Stage Door Address

555 Commerce Street
Fort Worth, TX 76102

This is the preferred entrance for all artist and production related staff

Loading Dock Address

215 East 5th Street
Fort Worth, TX 76102

We request that no large trucks move in/out of the loading dock between the hours of 4pm & 6pm on weekdays

Truck and Bus parking

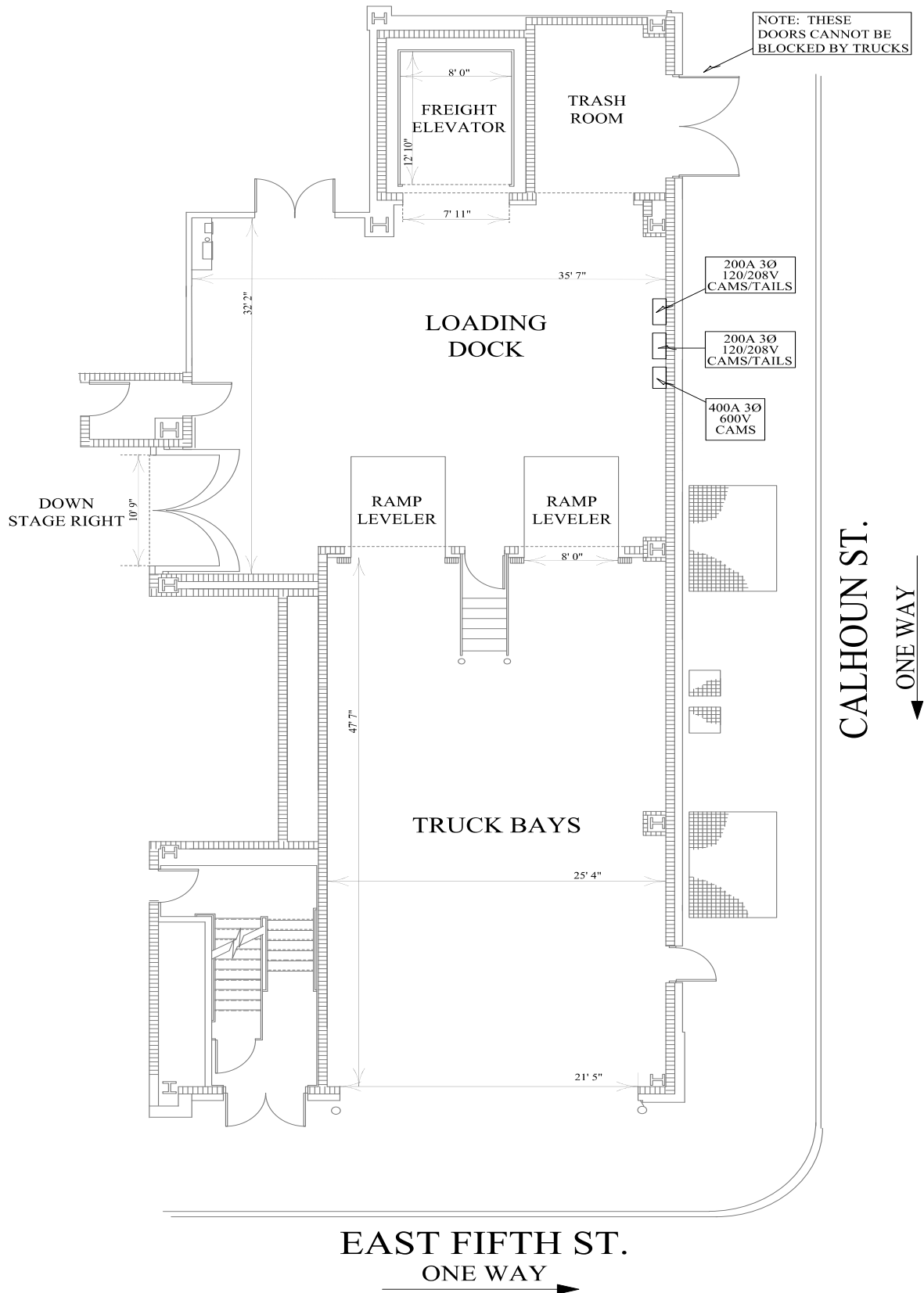
- One trailer is permitted in the dock for the run of a show, we ask that you please leave one bay clear at all times for deliveries.
- Trailers can stage on 5th Street along the back of the theater, all other trailers will need to leave after load-in.
- Bus Parking is only permitted on 5th Street along the back of the theater with advance notice.

Other Parking Information

- The loading dock is the preferred delivery address for all freight and large packages.
- All Production related deliveries should be directed to the stage door.
- All Vehicles must have Permits that can be emailed in advanced or can be obtained at Security located at the Stage Door.
- Paid Parking is available at the two parking garages in red in the map below.



Loading Dock





Stage

Dimensions

Proscenium Opening Width:	58 ft 0in (adjustable Legs to a min. of 41 ft 0in)
Proscenium Opening Height:	40 ft 0in (adjustable Header to a min. of 20 ft 0in)
Stage Depth:	51ft 0in
Stage Width:	115ft 0in
Counterweight System 91 LS:	51ft 0in
Plaster Line to Apron:	4ft 1in
Stage Right Wing: (Proscenium to wall)	29ft 0in
Stage Left Wing: (Proscenium to rail)	28 ft 0in
Orchestra Pit Dimensions	12ft 0in x 59ft 3in
Orch. Pit Shelf distance	8ft 3in
Orch. Pit Max Depth	15ft 3in
Truck Bay Doors	12ft 0in x 8ft 0in
Dock to Stage	11ft 9in x 9ft 6in
FOH Mix position to Plaster Line	77ft 6in
Booth to Plaster Line	110ft 10in
Mix Position	12ft 0in x 8ft 0in

Stage Floor

The Stage Floor surface is 2 ¾" tongue-and-groove maple hardwood attached to 2"x 4" sleepers over 2" resilient pads and insulation.

(Screwing into the deck is permitted, a small fee will be incurred for any large holes left. We do NOT allow any screwing into our Apron/Pit Lift)

Soft Good Inventory

<u>Quantity</u>	<u>Description</u>	<u>Height</u>	<u>Width</u>
(14)	Black Velour Legs – Flat	37ft 0in	12ft 0in
(7)	Black Velour Borders – Flat	12ft 0in	73ft 0in
(12)	Black Velour Tabs	37ft 0in	8ft 0in
(2)	Black Velour BI-part Traveler	37ft 0in	73ft 0in
(2)	Black Velour Panels (2 Panel Blackout)	32ft 0in	29ft 6in
(1)	Black Sharkstooth Scrim	37ft 0in	73ft 0in
(1)	White Sharkstooth Scrim	37ft 0in	73ft 0in
(1)	Grey RP Plastic	33ft 0in	56ft 0in
(1)	White Muslin Seamless Cyc	33ft 0in	56ft 0in



Rigging Specifications

Fly System

Single Purchase counterweight system. Operation is either from Locking Rail on stage left deck or from the operating gallery level stage left.

Arbor Capacity: 2000 lbs.

Wire Rope Lift Lines: 1/4" Diameter, aircraft cable with a 875 pound working load limit.

Rigging Support steel: 2000 Pound capacity counterweight sets, spaced 6 inches on center

Rope Lock Recommended imbalance: 40 pounds (7000 lbs. breaking strength with an 8/1 safety factor). There are six lift lines per batten.

Lineset Schedule

an excel file is available [here](#)

Load Ratings

Loading Gallery: 750 lbs. per square foot

Fly Gallery: 250 lbs. per square foot

Fly Gallery Pin Rail and Rope Block Wells: 500 lbs. per square foot

Lock Rail: 500 lbs. per linear foot, with two 2000 lbs. concentrations

Gridiron Deck Uniform Load: 50 lbs. per Square Foot

Gridiron point loads: The structural Engineer was advised that chain hoist point loading could be as much as 15,000 lbs. distributed on 1 to 2 chain hoists. Hoist loads must be properly attached and distributed on the gridiron.

Elevations

Grid Height:	90ft 3in
Fly Rail Loft:	48ft 0in
Lower Loading Bridge Ht.	78ft 0in
Upper Loading Bridge Ht.	86ft 0in
Pin Rail (SR & SL)	48ft 0in

Battens

Quantity:	91
Maximum Trim:	90ft 0in
Length:	73ft 6in
Arbor capacity:	2,000 lbs.
Batten Travel from deck	87ft 0in

House Curtain

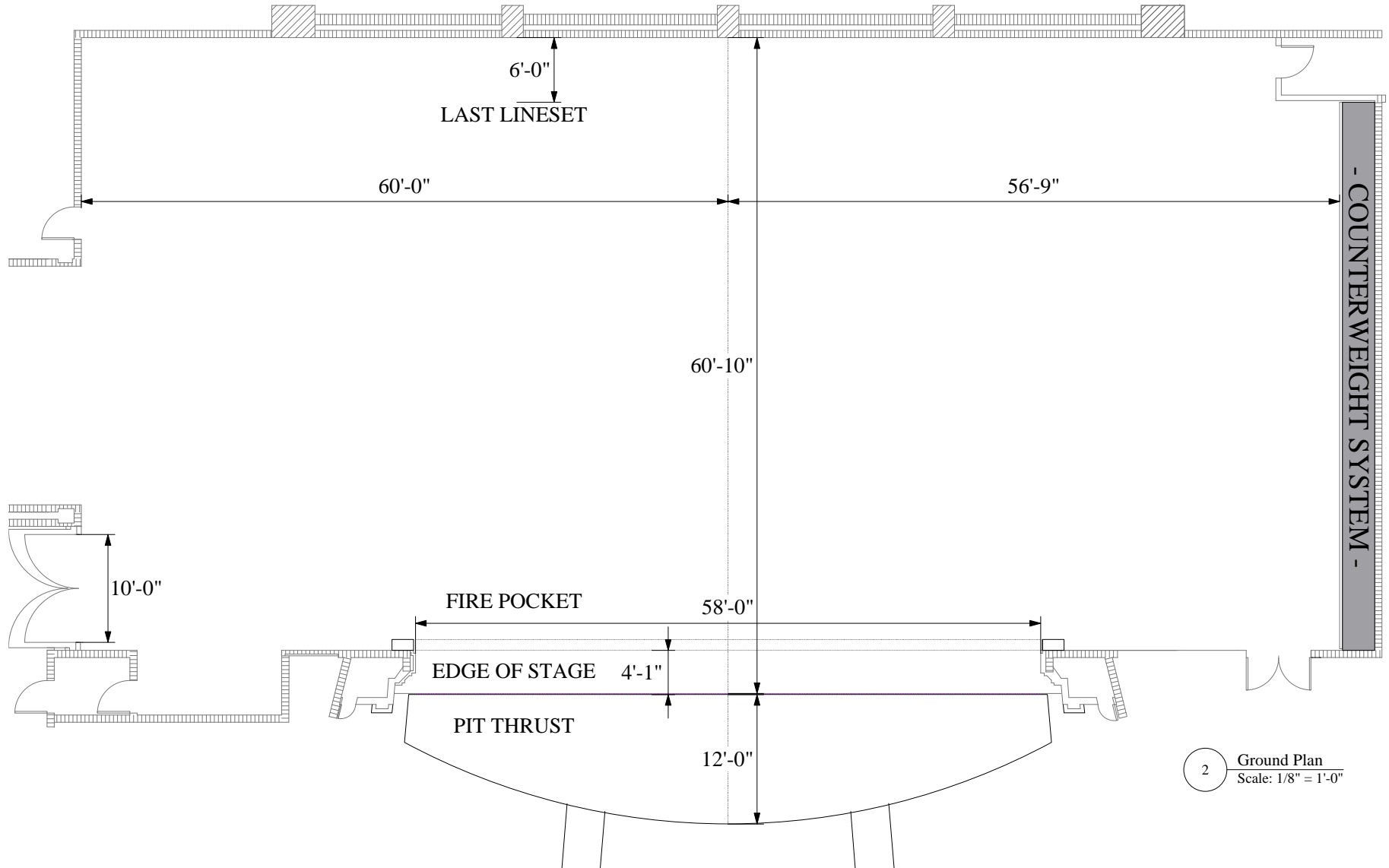
Guillotine only, with a center split for paging and bows. Operated from down stage left deck.

Rigging Inventory

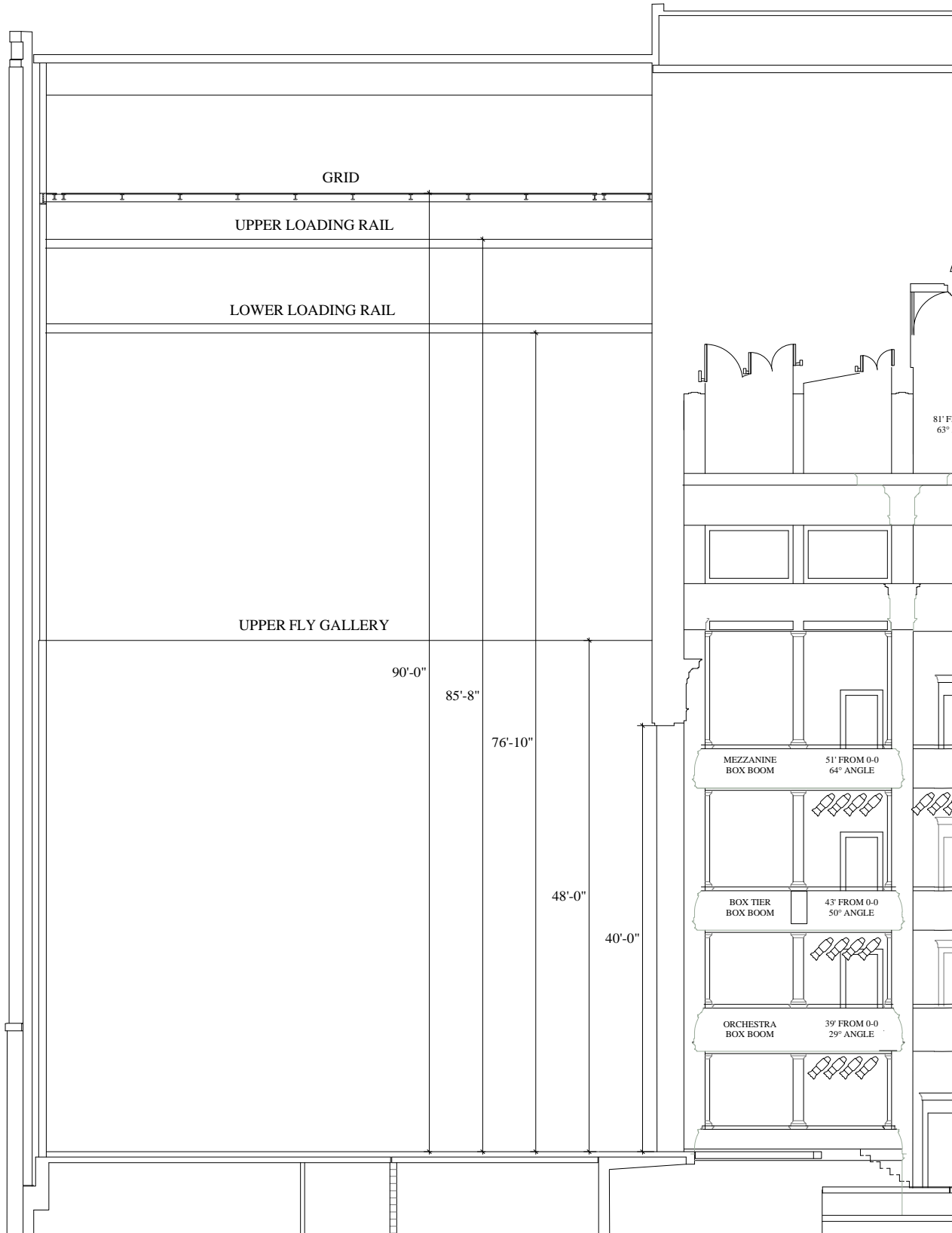
GOLO Capstan Power Winch (on Grid)	1200lbs. lifting capacity
2 Columbus McKinnon Lodestar Chain Hoist	1000lbs. lifting capacity
JR Clancy Mobile Capstan Hoist (Fly Rail)	1500lbs. pulling capacity

(Please contact Operations Department in advance to confirm availability of rigging inventory)

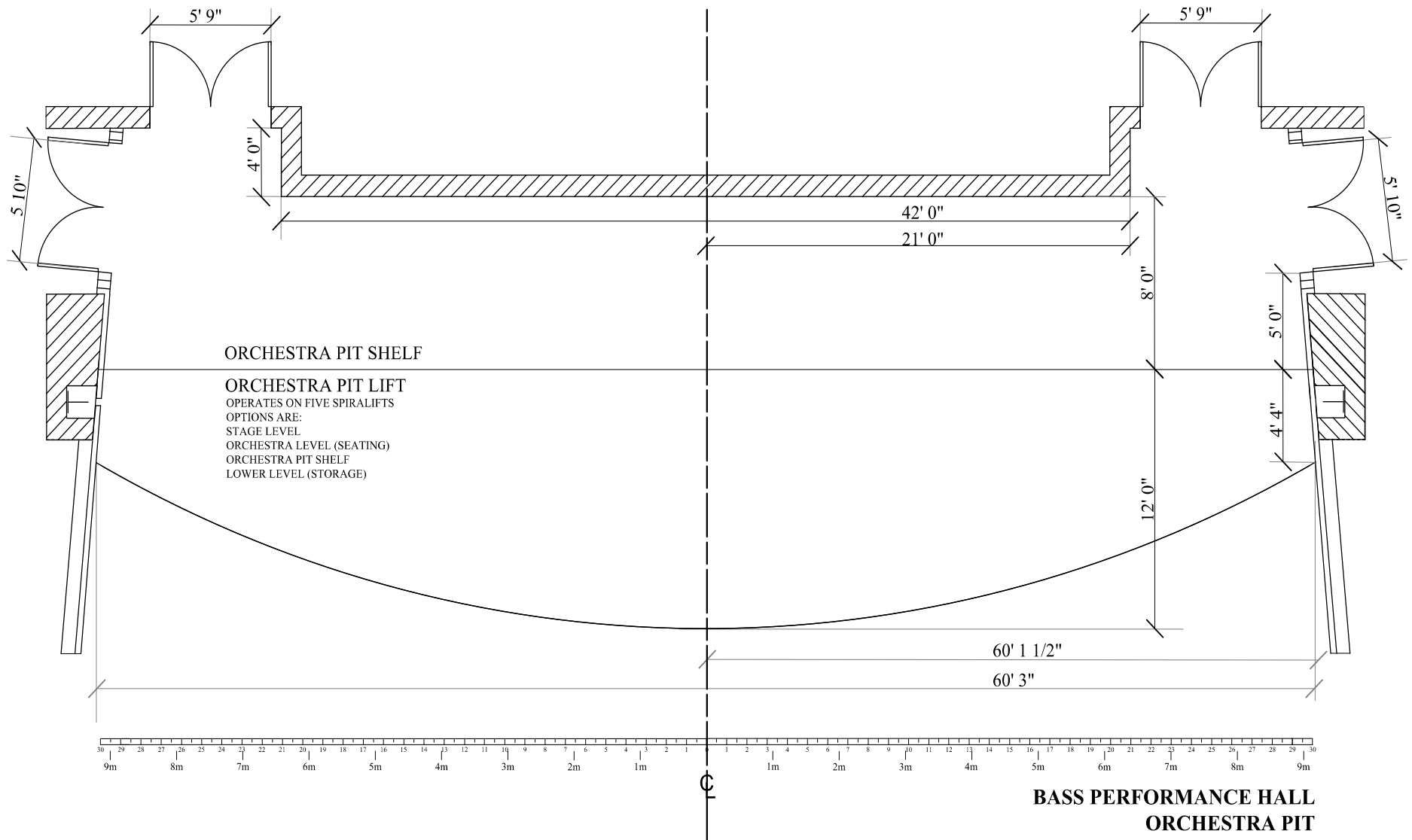
Ground Plan



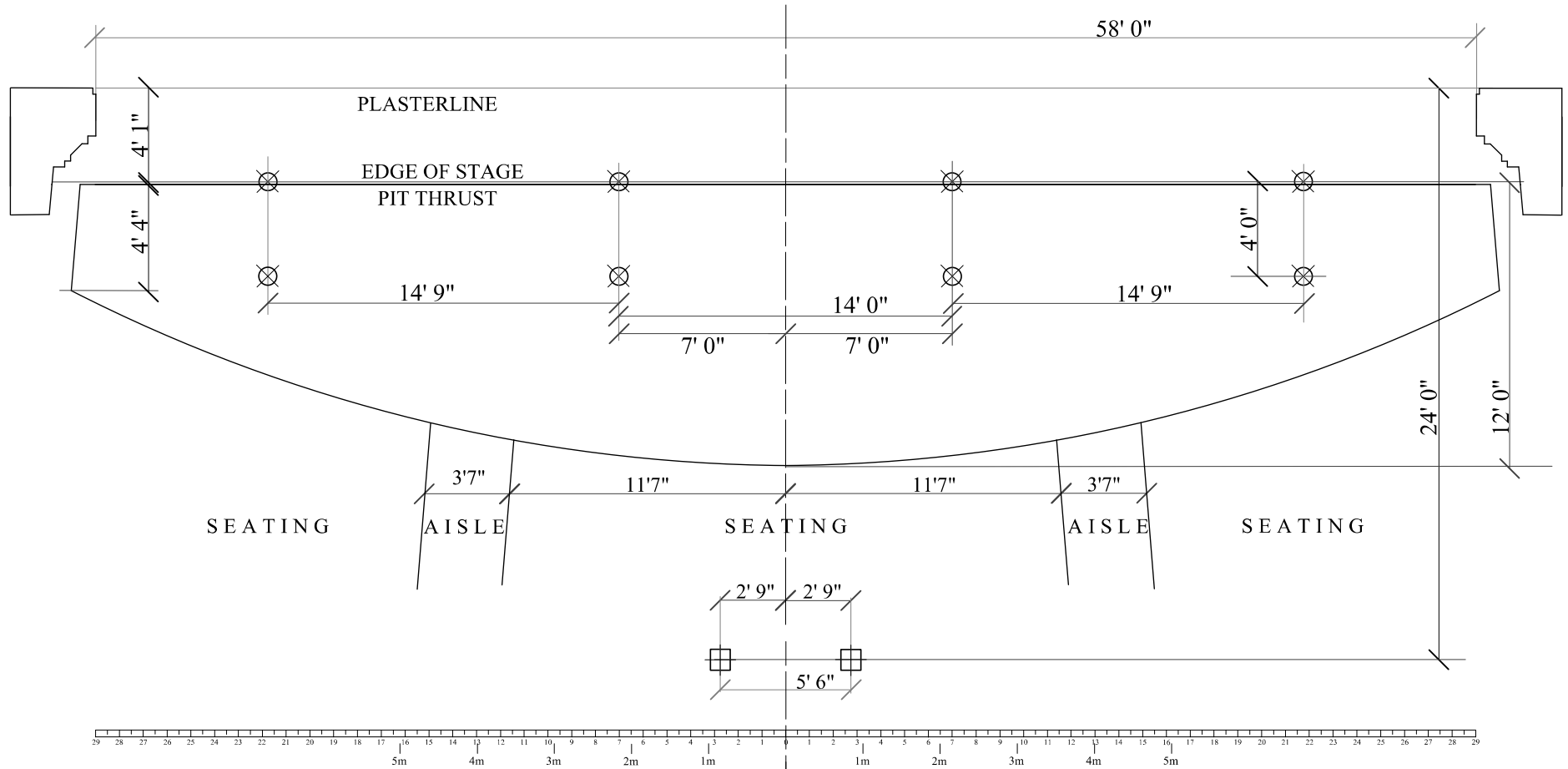
Elevation Diagram



Orchestra Pit Dimensions



FOH Rigging Diagram



⊗ 5" ROUND ACCESS - PHANTOM INSTALL 1998

⊞ 10" X 10" SQUARE ACCESS - PHANTOM INSTALL 2016

**BASS PERFORMANCE HALL
DETAIL OF PIT THRUST / FOH RIGGING POINTS**



Power Distribution

Company Switches

<u>Type</u>	<u>Location</u>	<u>Size</u>	<u>Plug Type</u>	<u>Typical Use</u>
3-Phase 120/208V	Up Stage Right	100A	Camlocks & Lugs	Sound Isolated (<i>Broadway Sound</i>)
3-Phase 120/208V (2)	Stage Right Pin Rail	400A	Camlocks	Lighting (<i>Broadway Lighting</i>)
3-Phase 120/208V	Loading Dock	400A	Camlocks	
3-Phase 120/208V (2)	Loading Dock	200A	Camlocks & Lugs	

Heavy Duty Disconnect Switches

<u>Type</u>	<u>Location</u>	<u>Size</u>	<u>Plug Type</u>	<u>Typical Use</u>
Single-Phase 120v	Down Stage Right	30A	Duplex Edison	
Single-Phase 120v	Down Stage Right	30A	NEMA 5-30	
Single-Phase 250v	Down Stage Right	50A	NEMA 6-50	
3-Phase 120/208V	Down Stage Right	100A	5100R9W	
3-Phase 120/208V	Up Stage Right	60A	560R9W	Sound Isolated (<i>Sound</i>)
3-Phase 120/208V	Up Stage Right	100A	5100R9W	
3-Phase 120/480V	Up Stage Right	20A	HBL 2436	SR Stacking Motor
Single-Phase 250v	Down Stage Left	50A	NEMA 6-50	
3-Phase 120/208V	Down Stage Left	100A	5100R9W	
Single-Phase 120/208V	Up Stage Left	60A	560R9W	Sound Isolated
3-Phase 120/208V	Up Stage Left	100A	5100R9W	(<i>Broadway Automation</i>)
3-Phase 120/480V	Up Stage Left	20A	HBL 2436	Capstan Wench USL

**Please Refer to Stage Circuit Layout*

Constant Power

<u>Type</u>	<u>Location</u>	<u>Size</u>
(8) Stage Pin	4 Corners of Stage	20A
(8) Edison Duplex	4 Corners of Stage	20A
(2) Edison Duplex	Down Stage Left/Right	30A
(13) Switched Non-Dims	Stage Deck, Gallery,	20A

Dimmable Circuits

FOH (W/ Transfer Panel)	237
Stage Overhead	178
Stage Deck	27
60 amp	8
TOTAL	282



Lighting Specification

Control Equipment

ETC Gio @5 (4K Output)

ETC ION XE RPU (12,288 Output) 24 Universes.

ETC ION (4K Output)

ETC Nomad (6,144 Output) *Designer Remote*

All Worklights and Houselight presets are accessed via touchscreens located SR, SL, and Light Booth.

Control Accessibility

ETC Net 3 Gateways are located in the Catwalk, Stage Left Rack, and the Stage Right Rack. One portable gateway is available.

Dimmers

(10) ETC CEM 3 SR-48 Dimmer Racks

Followspots

(4) Lycian 1295 EDLT – 3K

Lighting Inventory

<u>Type</u>	<u>Wattage</u>	<u>Quantity</u>	<u>Frame Size</u>
ETC Source Four 50°	575w	10	6 ¼"
ETC Source Four 36°	575w	39	6 ¼"
ETC Source Four 26°	575w	55	6 ¼"
ETC Source Four 19°	575w	45	6 ¼"
ETC Source Four 10°	750w	60	12"
ETC Source Four 5°	750w	60	14"
ETC Source Four Pars	575w	40	7 ½"
ETC Source Four Fresnels	575w	24	7 ½"
ETC Desire D60 LED	56.5w	16	
SL 660 LED strips	755w	14	
MAC Viper Performance		8	
SolaFrame 1K		3	

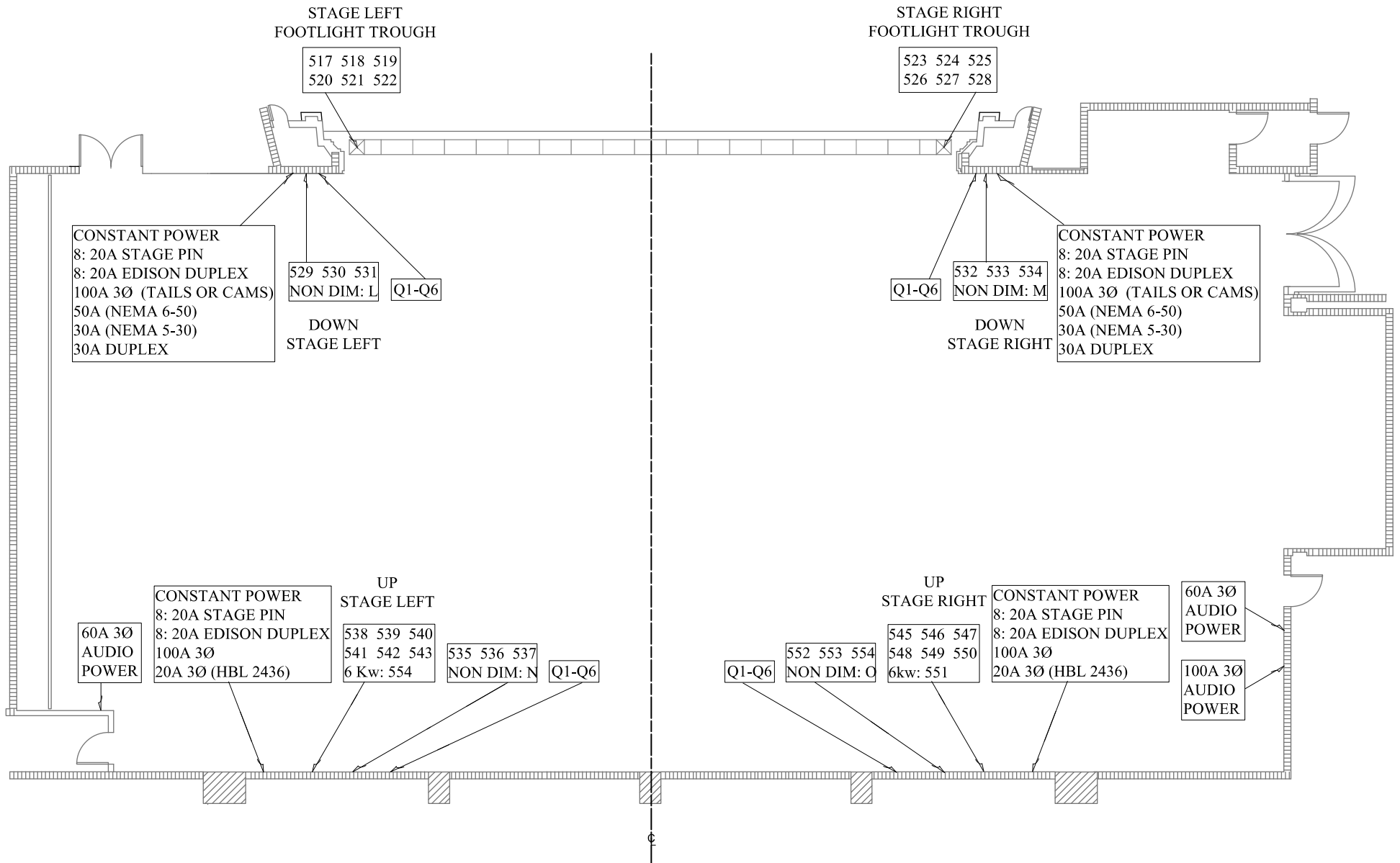
Lighting Accessories

<u>Type</u>	<u>Quantity</u>
Scenery Bumpers	13
10" Barn Doors	30
7 ½" Barn Doors	14
6 ¼" Top Hats	69
12" Top Hats	6

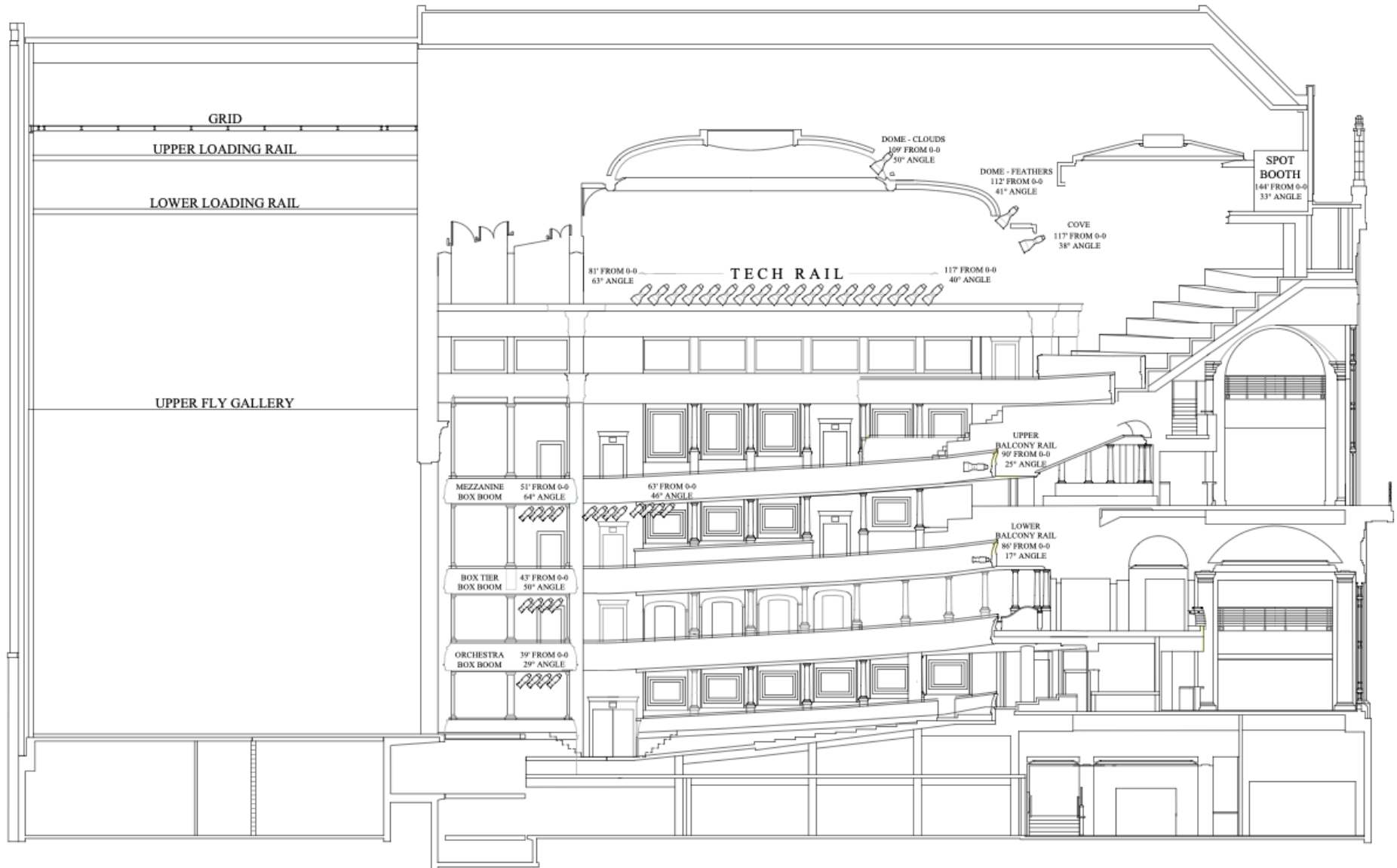
Cable

5', 10', 25', 50', 100' lengths of cable are available. Six circuit socapex multicable is also available in lengths of 50', 100' with breakouts/break ins. Twofers are available. A detailed cable inventory is *not* available upon request.

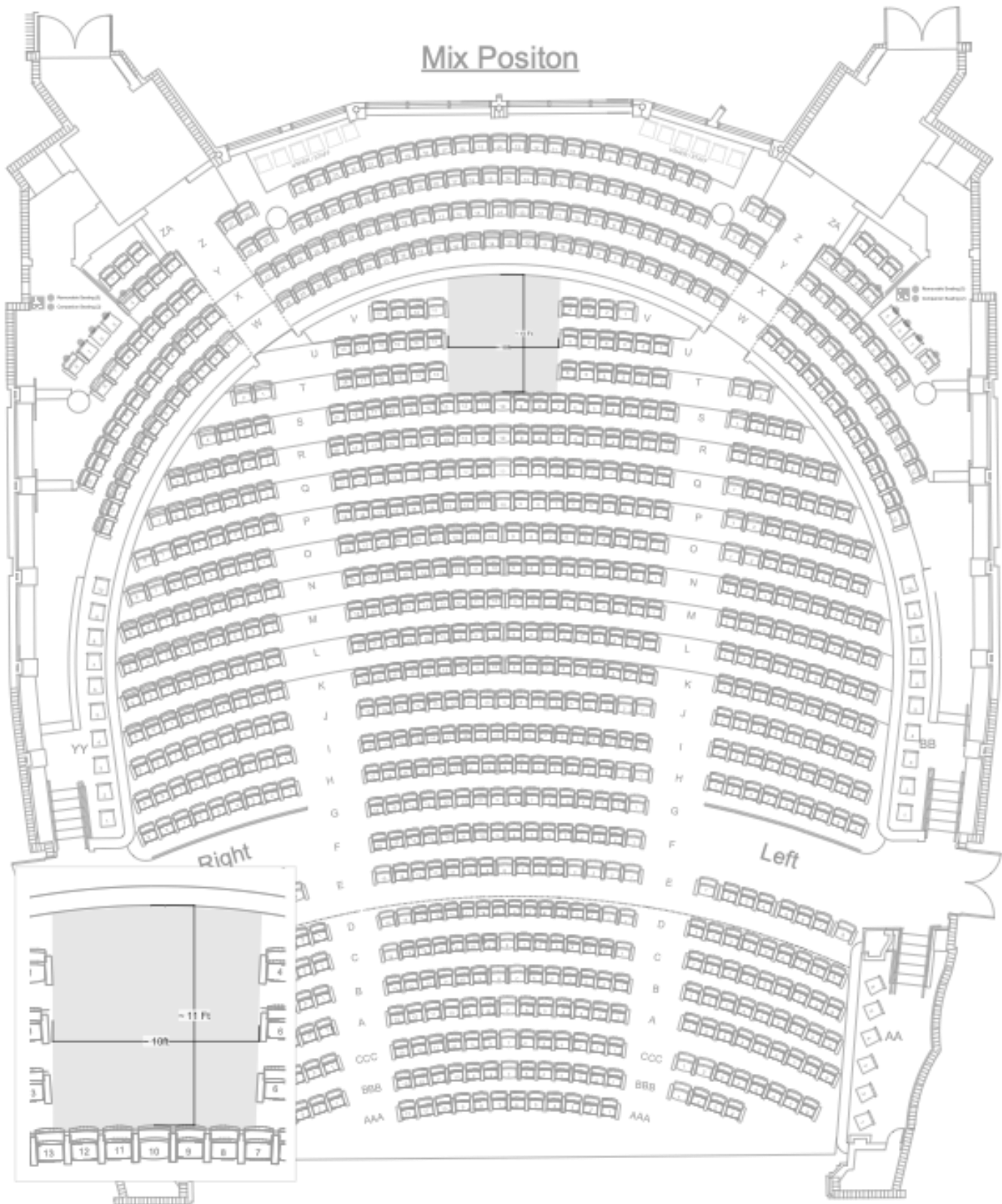
Stage Power Distribution Diagram



Bass Hall Section View



Audio Mix Position





Audio & Communication Specifications

Consoles

(2) Soundcraft Vi600 Digital Mixing Console (upgraded from Vi6) –
Consoles can be deployed at FOH, Stage Right, or Stage Left. Inputs are handled via (2) 64 Channel Soundcraft Vi Stageboxes that can be deployed DSL or DSR. House microphone splitter is 64 channels; 6 Klark Teknik DN1248 plus 4 passive patchable channels. AES and Analogue PA inputs are available at FOH and in the Audio Booth.

Main Speaker Arrays (Per Side)

- (2) Meyer MSL 6
- (4) Meyer DS 4P
- (4) Meyer MSL 4
- (2) Meyer MSL 2

PA is flown via 2 inverted CM 1ton and 2 inverted CM 1/2ton chain motors per side (refer to rigging diagram for specific placement) and are available for use by visiting companies.

Center Line Array

- (12) Meyer M'elodie

Ground Stacks (Per Side)

- (2) Meyer MSL 2
- (2) Meyer 700-HP

Front Fills

- (6) Meyer M1D

Fixed House Announce System

- (2) Meyer UPA
- (4) Meyer JM1P
- (4) Meyer 650P

Announce System speakers are painted to blend in with the surrounding area. They can be used independently or tied in with the center cluster for full house coverage.

House Delays

Delays speakers reinforce the Orchestra level underneath the balcony, the Mezzanine level, the top half of the Upper Gallery, and the extreme side seating rows on all levels.

Stage Monitors

- (16) Meyer UM1P
- (6) Meyer UPJ – 1P
- (4) Meyer CQ-2
- (2) Meyer 650P

Microphones

- | | | |
|--|---------------------------|--------------------------|
| (8) Shure SM58 (4 switched mics/ 4 unswitched mics.) | (1) Shure Beta 52 | (2) Crown PCC 160 |
| (4) Shure SM 57 | (2) AKG 451 | (4) Shure MX 393 |
| (8) AKG 535 | (6) Shure SM 81 | (1) EV RE20 |
| (4) Sennheiser MD421 II | (2) AKG 414 | (6) Countrymen M2HP6ff10 |
| (4) EV MD 408 | (4) Audio Technica 4033A | (3) Sennheiser MD 431 II |
| (1) Audix D6 | (2) AKG 568 (shotgun mic) | |



Wireless Microphones

- (10) Total Channels of Shure ULXD Wireless are available.
- (10) ULXD Hand-Held Transmitters with SM58 capsules.
- (10) ULXD Belt-Pack Transmitters with Countryman B6 Lavaliers
- (2) ULXD Shure KSM9 Capsules

Party Line Backstage Communication

- Clear Com SB-704 powered base station in the sound booth.
- Clear Com RM-704 (*remote stations*) located in the Lighting Booth, Stage Right and Stage Left Equipment racks.
- Clear Com KB-112 (*speaker stations*) located throughout the building in breakrooms and other production rooms
- Wireless Riedel Bolero system** - (10) beltpacks available upon request.

Assisted Listening System

Williams Sound PPA-T45 transmitter (wireless, operating at 72.1 75.9 MHz) and suitable compliment of PPA-R38 receivers with Shure SE425 earphone for both Assisted Listening and Audio Description sound reinforcement systems.

Paging and Program

Backstage Paging is available to all dressing rooms and backstage areas. Analog page inputs are available at all four corners of the stage and in the sound booth. Permanent page stations are located DSR and DSL.

Cable Path to Front of House

Path to FOH starts at either DSL or DSR and flows through underground port holes. 250FT is recommended. Path from Orchestra Pit to backstage or FOH follows similar routes.
Front of house mix position measures (12'x 8') and can be extended to (12'x 10.5').

Audio Booth

Control room monitoring utilized (2) Meyer HD-1 near field monitors and (1) EAW SB 48 subwoofer, time and phase aligned to main house system. A double-paned, sound isolating booth window opens in two sections. Certain windows can be removed completely upon request

Video Equipment

Projector

- Panasonic PT- RZ970 – 10K Lumen(Laser)
- Panasonic DZ- 21K2 – 20K Lumen(Lamp)

Projector Lenses

- Panasonic ET-DLE085
- Panasonic ET-DLE170
- Panasonic ET-DLE350
- Panasonic ET-DLE450

Projection Screen

- 13'6" x 24' (16:9)
- 7'10.5" x 14' (16:9)
- 9'x12' (4:3)



Dressing Rooms & Wardrobe

*All Dressing Rooms are on the West (Stage Left) side of the building.
(dressing rooms conform to Actor’s Equity Association Standards)*

Stage Level

<u>Room</u>	<u>Typical Use</u>	<u>Capacity</u>
#1 Dressing Room	Principal Artist	2-4 person (Shower & Toilet)
#2 Dressing Room	Principal Artist	2-4 person (Shower & Toilet)
#3 Dressing Room	Principal Artist	2-4 person (Shower & Toilet)
#4 Dressing Room	Principal Artist	2-4 person (Shower & Toilet)
Company Manager’s Office	Production Office	4-6 person

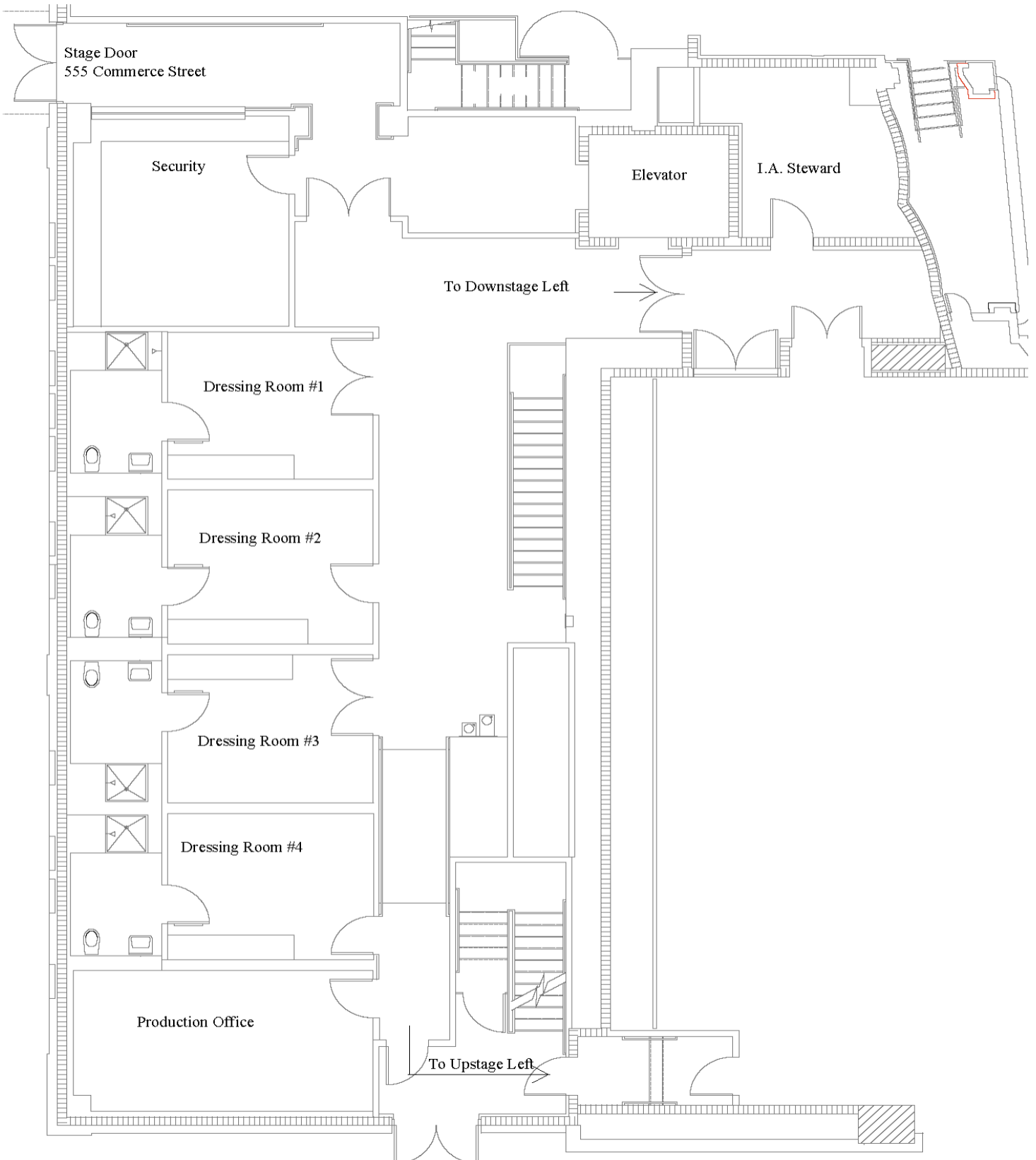
Lower Level

<u>Room</u>	<u>Typical Use</u>	<u>Capacity</u>
#1 Dressing Room	Ensemble	2-4 person (Shower & Toilet)
#2 Dressing Room	Ensemble	2-4 person (Shower & Toilet)
#3 Dressing Room	Ensemble	2-4 person (Shower & Toilet)
#4 Dressing Room	Ensemble	2-4 person (Shower & Toilet)
#5 Dressing Room	Chorus	8-10 person (Shower & Toilet)
#6 Dressing Room	Chorus	8-10 person (Shower & Toilet)
#7 Dressing Room	Chorus	8-10 person (Shower & Toilet)
#8 Dressing Room	Chorus	8-10 person (Shower & Toilet)
Musician Assembly Room	Musicians	25-30 People
Men & Women Locker Rooms	House Staff	20 people (Shower & Toilet)
Performers Lounge	Green Room	Office, Kitchenette

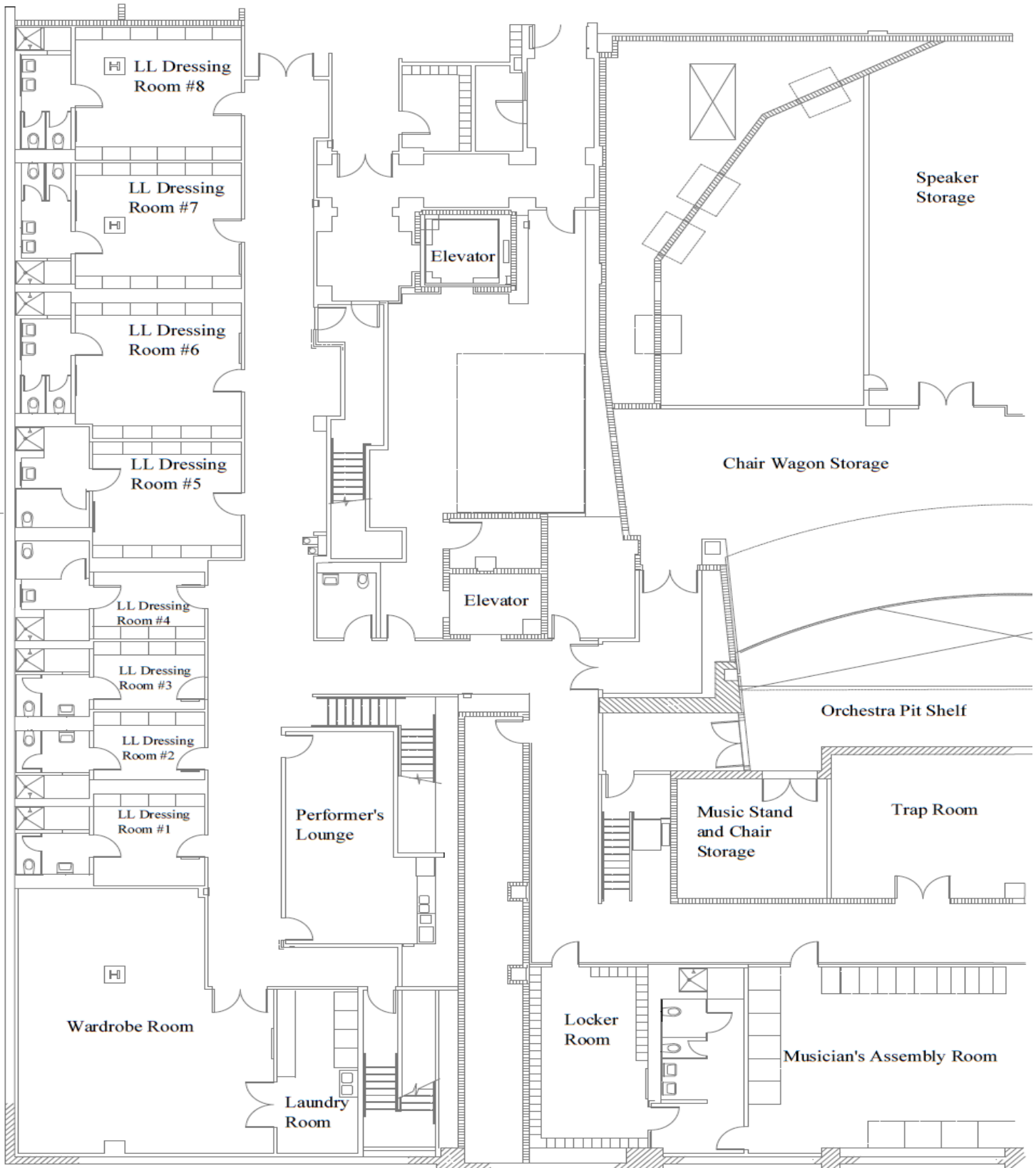
Wardrobe Room

- (3) 18 lb. Washing Machines
- (3) 20 lb. Electric Dryers
- (1) Double Laundry Sink
- (15) Rolling Racks

Orchestra Level Dressing Rooms



Lower Level Dressing Rooms





Miscellaneous Information

Additional Equipment

Stage Equipment

- (1) 40' Single Person Genie Lift
- (1) 19' Genie Scissor Lift
- (1) 19' Single Man Roundabout Genie Lift
- (6) Black Vinyl Dance Flooring

Platform Stock

- (34) 4'x 8' Wenger StageTek (*Adjustable Legs 8" – 40"*)
- (4) 4'x 4' Wenger StageTek (*Adjustable Legs 8" – 40"*)
- (2) 8/16" Stairway
- (2) 8/24" Stairway
- (1) Lectern (*with Microphone*)
- (1) Conductor Podium
- (9) 4-Step Chorale Risers

Miscellaneous Equipment

- 6' and 8' Tables
- 6', 8' and 10' stepladders
- Dollies, hand trucks and sheet carts

Please contact Operations Department for use of equipment below. All equipment is subject to availability

Support Areas

Bass Hall has multiple support areas that may be utilized for any production or event.

- McDavid Studio
- Van Cliburn Rehearsal Hall
- Canteen Catering Support

Pianos

- (2) 9' Steinway (*owned by The Cliburn*)
- (1) 7' Yamaha C7
- (1) Yamaha Upright
- (1) Steinway Upright

Orchestra Equipment

- (100) Manhasset Music Stands
- (65) Stand Lights
- (80) Musician Chairs
- (20) Cello Chairs
- (4) Bassist Chairs
- (1) Conductor Stand